

Berrien County Road Department

2860 E. Napier Avenue
Benton Harbor, MI 49022

Phone: 269-925-1196
Fax: 269-925-8098
www.bcroad.org

FOR IMMEDIATE RELEASE

WEDNESDAY, APRIL 19, 2023

CONTACT: Adri Boone – Berrien County Road Department Administrative Assistant
aboone@bcroad.org – 269-925-1196 ext. 4410

SAWYER ROAD CONSTRUCTION BEGINS NEXT WEEK

TOWNSHIP: Chikaming Township

LOCATION: Sawyer Road between Red Arrow Highway and Flynn Road

Phase 1: Sawyer Road between Flynn Road and the Railroad Tracks

Starting the week of 4/24/2023

Phase 2: Sawyer Road between the Railroad Tracks to Red Arrow Highway

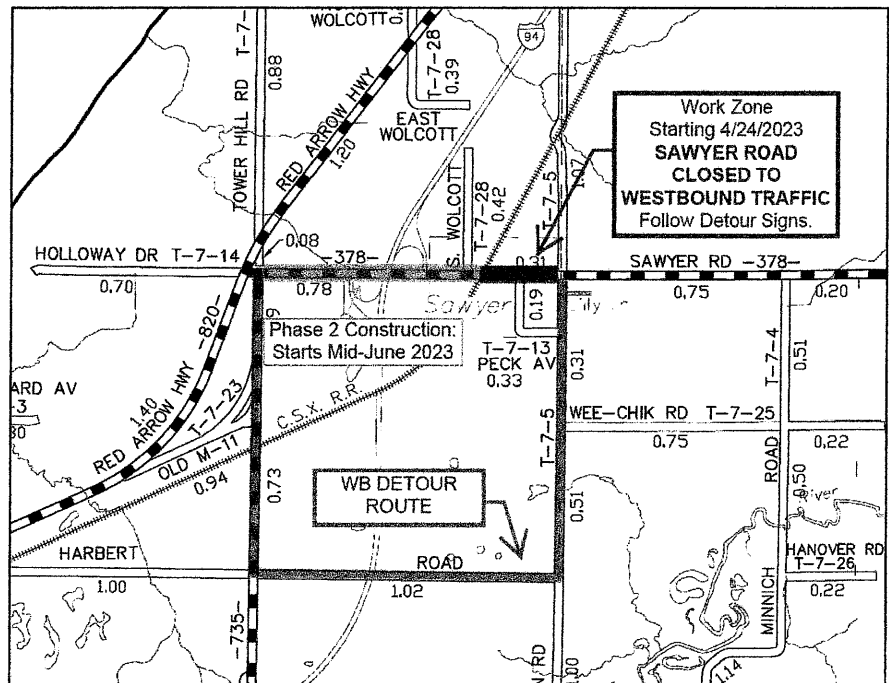
Starting Mid-June 2023

CLOSEST CITIES: Sawyer

START DATE: Monday, April 24, 2023

END DATE: Summer 2023

PROJECT: Sawyer Road rehabilitation including existing pavement milling, asphalt paving, drainage and structure improvements. Project will take place in two phases. Phase 1 begins the week of April 24, 2023.



TRAFFIC RESTRICTIONS: During Phase 1, all westbound Sawyer Road traffic between Flynn Road and the railroad tracks will be detoured.

- Sawyer Road will be CLOSED to westbound traffic (between Flynn Road and the railroad tracks).
- Eastbound traffic will be permitted through as normal.
- Any local traffic will be required to enter the work zone from the Red Arrow Highway or Three Oaks Road intersections.
- Traffic exiting the work zone will do so by traveling eastbound toward Flynn Road.

###

BERRIEN COUNTY ROAD DEPARTMENT

SPECIAL PROVISION FOR MAINTAINING TRAFFIC

TRAFFIC RESTRICTIONS

Night work will not be allowed.

Work will not be allowed on holiday weekends, including Labor Day and the 4th of July, as directed by the engineer. Saturday work other than holiday weekends will be allowed.

A Detour will be put in place to allow work to be completed. Adequate access must be maintained to Downtown business and Truck Stop at all times. Coordination will need to be done with Truck Stop during reconstruction of their driveways.

The Project will need to be done in two phases. Phase One will be from the Railroad Tracks East to Flynn Rd and will need to be completed prior to Phase Two, this includes all HMA, Concrete Curb & Gutter and Drainage Structure work. Phase Two will then be from the Railroad tracks to Red Arrow Highway.

TRAFFIC CONTROL DEVICES

All traffic control devices and their usage shall be in accordance with provisions in the 2011 Edition, as amended, of the Michigan Manual of Uniform Traffic Control Devices (MMUTCD), as amended. All construction signs, unless otherwise noted, shall be 4'x 4', mounted at a bottom height of 5 feet and placed as indicated on the plans. When signs are no longer applicable, they shall be removed or have their legend completely covered with plywood or approved equal, if the posts are driven. Signs can no longer be mounted on Type III Barricades. Signs near Type III Barricades shall have separate supports.

Reflectorized strips are required on both sides when barricades are facing traffic in both directions.

Channelizing devices shall be used to separate traffic from the work and if directed by the Engineer or shown on the plan sheets to separate opposing traffic lanes.

Plastic cones may be used as channelizing devices only during day light hours. If plastic cones are used, they shall be a minimum of 28 inches in height and placed as directed by the Engineer. Metal drums or metal barrels shall not be used as traffic control devices.

All traffic control devices shall meet Traffic Special Detail WZD-125-E.

BERRIEN COUNTY ROAD DEPARTMENT

SPECIAL PROVISION FOR MAINTAINING TRAFFIC

GENERAL REQUIREMENTS

Traffic shall be maintained by the Contractor throughout the project in accordance with the requirements of Section 104.11, 812 and 922 of the 2020 MDOT Standard Specifications for Construction and as herein specified. The Contractor is advised that the 2011 Edition, as amended, of the Michigan Manual of Uniform Traffic Control Devices is hereby established as governing all work in connection with traffic control devices, barricade lighting, etc., required on this project. The Contractor shall coordinate this work with other contractors performing work within the construction influence area or adjoining areas to avoid conflicts in the maintenance of traffic, construction signing and the orderly progress of work.

PROJECT – GENERAL

Any utility trenches across commercial drives shall be maintained by the use of existing or salvaged materials and costs associated with this work included in Minor Traffic Devices.

Necessary emergency work performed by the County due to the negligence of the Contractor will be billed against the Contractor.

Walks, driveways and entrances to building shall not be unnecessarily blocked. Vehicular access shall be maintained to all properties designated by the Engineer at all times. Construction shall be completed in such a manner as to maintain the required entrance width for traffic at all times. When partial widths of new pavement are available to traffic, access to drives shall be provided immediately.

MDOT Standard M0140A shall be used for traffic control through the project. Additional "Road Work Ahead" signs will be placed on the side's streets and each direction on Napier Ave and Nickerson Ave as directed by inspector.