

NEW BUFFALO-BRIDGMAN TRANSMISSION LINE REBUILD PROJECT

Indiana Michigan Power (I&M) representatives plan power grid upgrades to improve electric reliability and efficiency for customers in southwest Berrien County. The New Buffalo-Bridgman Transmission Line Rebuild Project involves rebuilding about 21 miles of power line between New Buffalo and Bridgman.

WHAT

The project involves:

- Rebuilding about 7 miles of power line from New Buffalo Substation, off East Clay Street, to Three Oaks Substation, off Hickory Street
- Rebuilding about 6 miles of power line from Three Oaks Substation to Lakeside Substation, off West East Road
- Rebuilding about 8 miles of power line from Lakeside Substation to Bridgman Substation, off Red Arrow Highway

WHY

The project strengthens the local electric transmission system by replacing aging poles and wires from the 1950s with modern equipment.

Rebuilding the line:

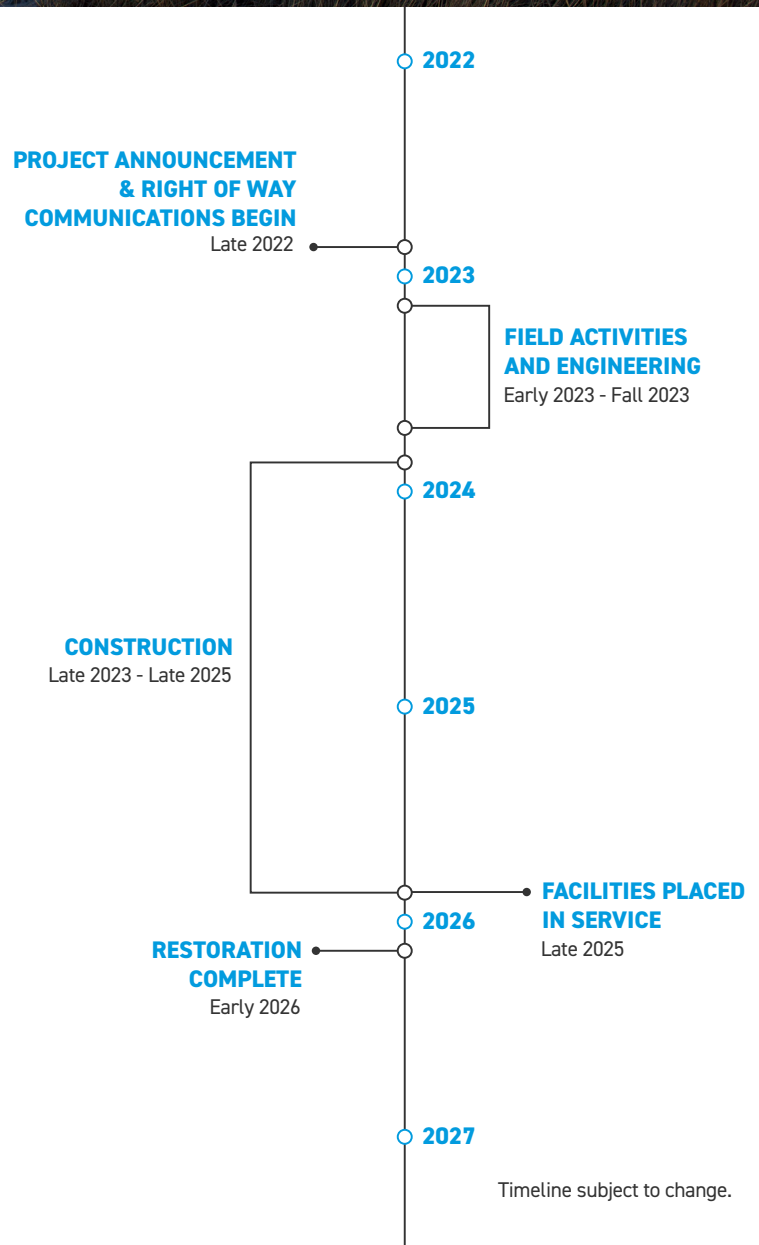
- Reduces the need for frequent maintenance
- Lessens the likelihood of power outages
- Speeds recovery of service in the event outages occur

WHERE

The project area includes:

- Bridgman
- Lakeside
- New Buffalo
- Three Oaks
- Chikaming, Three Oaks, New Buffalo and Lake townships in Berrien County

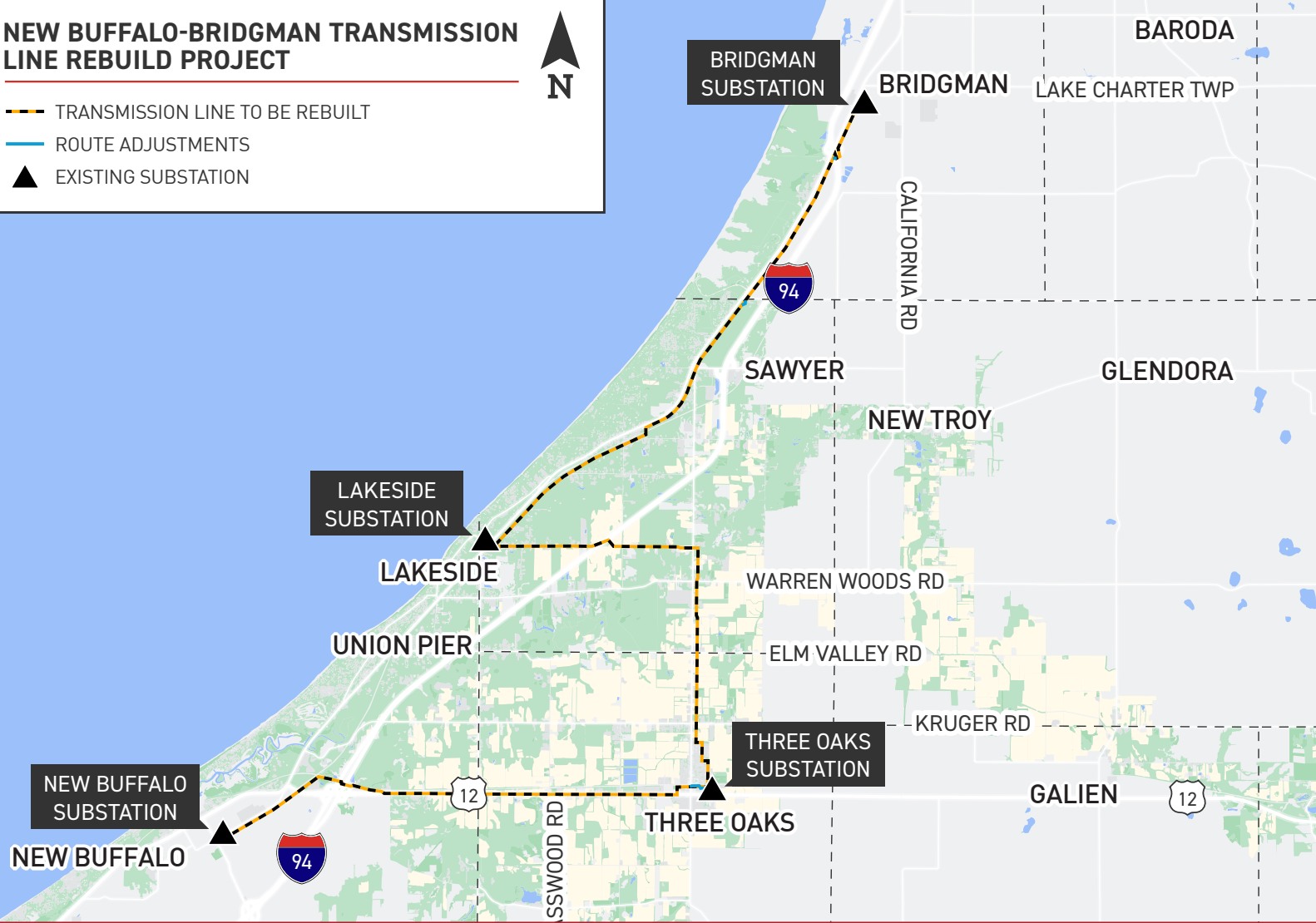
Company representatives plan to rebuild the power line in the existing right-of-way, which may require acquiring new or updating existing property easements. Easements are defined land rights that property owners grant the utility to allow for the safe construction, operation, and maintenance of the power line.



NEW BUFFALO-BRIDGMAN TRANSMISSION LINE REBUILD PROJECT



- TRANSMISSION LINE TO BE REBUILT
- ROUTE ADJUSTMENTS
- EXISTING SUBSTATION

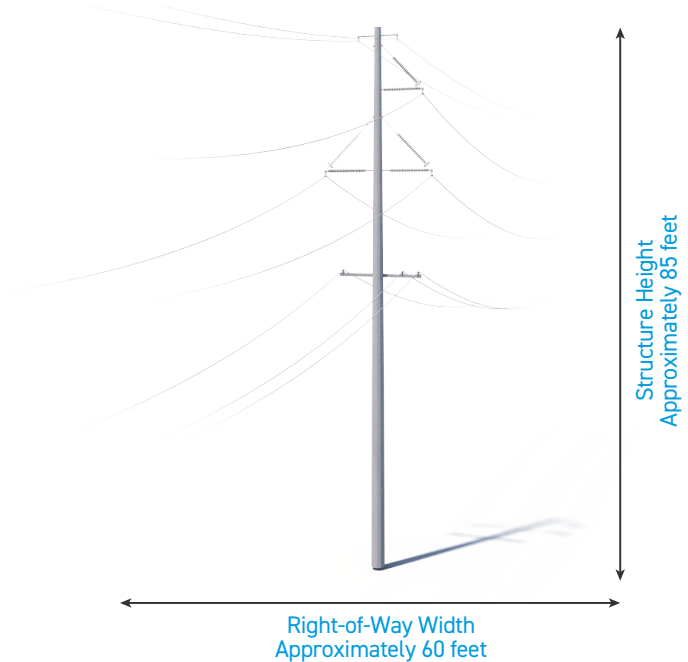


TYPICAL STRUCTURES

The project involves installing steel poles.

Typical Pole Height: [Approximately 85 feet*](#)

Typical Right-of-Way Width: [Approximately 60 feet*](#)



*Exact structure, height, and right-of-way requirements may vary.

WE VALUE YOUR INPUT. PLEASE SEND COMMENTS AND QUESTIONS TO:

ERIC GIFFEY · PROJECT OUTREACH SPECIALIST

EAGIFFEY@AEP.COM · 614-736-8971

INDIANAMICHIGANPOWER.COM/NEWBUFFALO-BRIDGMAN

